

9.02  
8.93  
8.91

7.52  
7.51  
7.50  
7.50  
7.48  
7.34  
7.32  
7.32  
7.31  
7.31

6.92  
6.88  
6.87  
6.83

4.32  
4.32  
4.30  
4.30  
4.28  
4.28

3.32

2.98

2.51  
2.50  
2.50

2.49

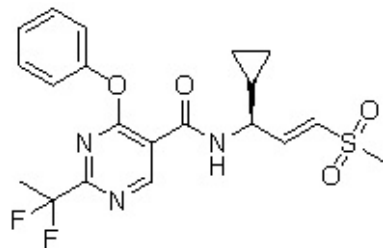
1.91  
1.87  
1.82

1.19  
1.15  
1.13  
1.10  
1.09  
1.07

0.58  
0.56  
0.54  
0.51  
0.49

0.48  
0.40  
0.39  
0.37

$^1\text{H}$  NMR (400 MHz, DMSO- $d_6$ )  $\delta$  9.02 (s, 1H), 8.92 (d,  $J$  = 8.3 Hz, 1H), 7.58 – 7.41 (m, 2H), 7.40 – 7.23 (m, 3H), 6.96 – 6.76 (m, 2H), 4.30 (td,  $J$  = 8.3, 2.8 Hz, 1H), 2.98 (s, 3H), 1.87 (t,  $J$  = 19.0 Hz, 3H), 1.19 – 1.01 (m, 1H), 0.63 – 0.32 (m, 4H).



Chemical Formula:  $\text{C}_{20}\text{H}_{21}\text{F}_2\text{N}_3\text{O}_4\text{S}$

Exact Mass: 437.12

Molecular Weight: 437.46

